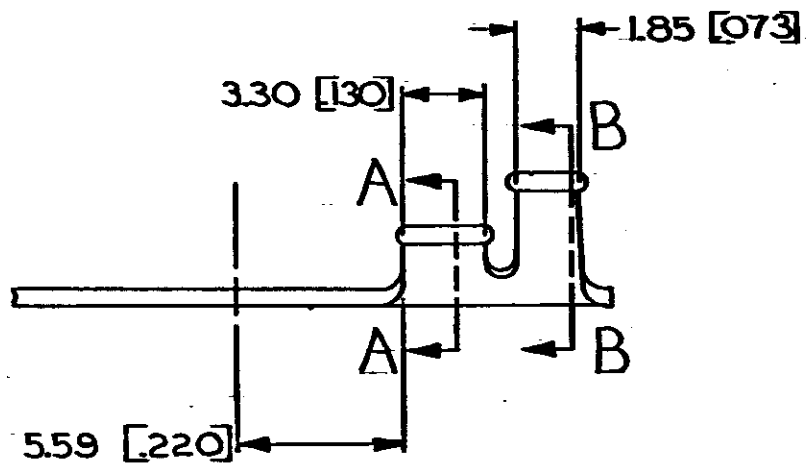
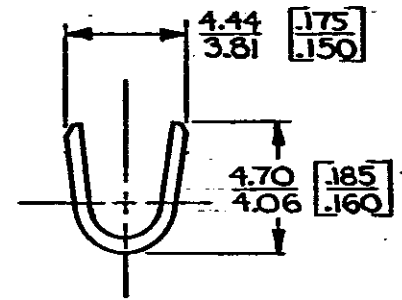
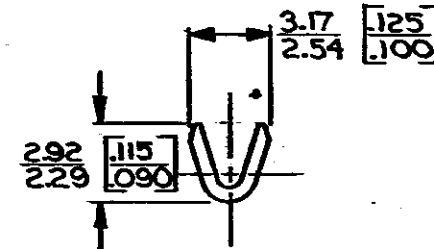
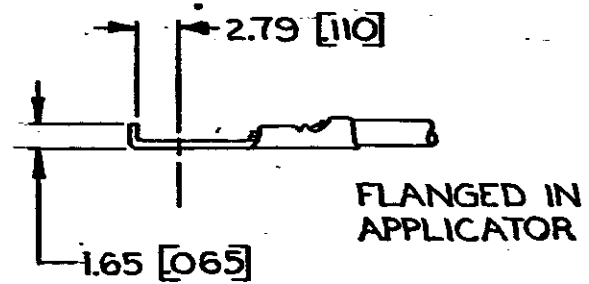
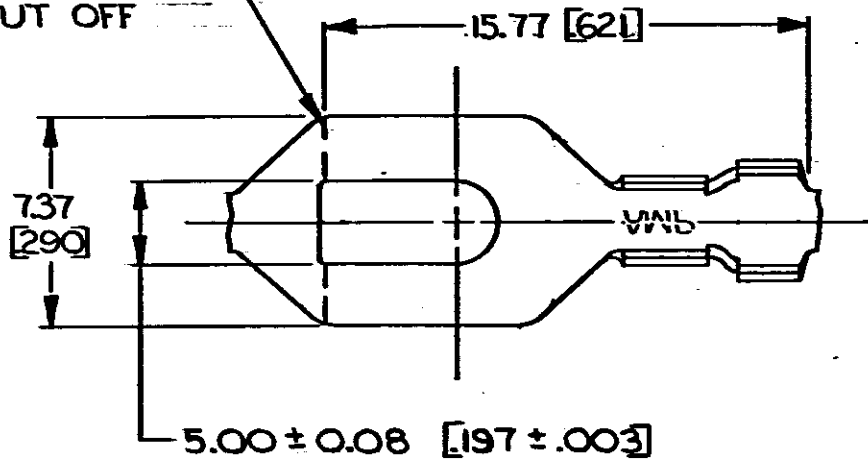


© COPYRIGHT 1964 BY AMP INCORPORATED, HARRISBURG, PA.  
 ALL INTERNATIONAL RIGHTS RESERVED. AMP INCORPORATED PRODUCTS  
 COVERED BY U. S. AND FOREIGN PATENTS AND/OR PATENTS PENDING.

REVISIONS						
P	F	ZONE	LTR	DESCRIPTION	DATE	APPROVED
✓	2		L	REDRAWN & REVISED A-3943	5-15-78	SS/

APPLICATOR  
CUT OFF



*10	0.2-0.6 mm <sup>2</sup> [24-20]	203-2.54 [080-.100]	TIN	0.51 [020] BRASS	41590 A 41590
STUD SIZE	WIRE RANGE	INSULATION RANGE	FINISH	MATERIAL	PART NO

- CONTINUOUS STRIP ON REELS.
- DIMENSIONS IN BRACKETS ARE IN INCHES.
- SUFFIX LETTER MUST BE USED ONLY WHEN ORDERING APPLICATOR TOOLING.

**METRIC**

UNLESS OTHERWISE SPECIFIED DIMENSIONS ARE IN INCHES mm TOLERANCES ON: DECIMALS ±0.33 [015] ANGLES ±1°	CONTRACT NO	AMP INCORPORATED Harrisburg, Pa.
MATERIAL	DR <i>A. Magano</i> 5-15-78	
SEE TABLE	CHK <i>L. Hoffmann</i> 7-25-78	NAME <b>SPADE</b>
FINISH	APPD <i>R.P. Hunt</i> 8-1-78	SIZE <b>B</b>
SEE TABLE	APPD <i>L. G. Hicks</i> 8-1-78	CODE IDENT NO <b>00779</b>
	DSGN APPD	DRAWING NO <b>41590</b>
	OTHER APPD	SCALE
		SHEET